

HAWTHORNE GOLD CORP.

TSX-V: HGC; US: HWTHF



CASSIAR GOLD CAMP FACT SHEET

Hawthorne Gold Corp. is a Canadian-based gold exploration and development company with key properties located in British Columbia, Canada.

Hawthorne Gold is led by respected mining leaders Richard Barclay and Michael Beley, who co-founded both Bema Gold and Eldorado. Hawthorne's goal is to become a junior gold producer by working towards production at the Cassiar Gold Mine in Q4 2009/Q1 2010 and continued resource development at the Frasergold and Taurus deposits.

2008 Accomplishments

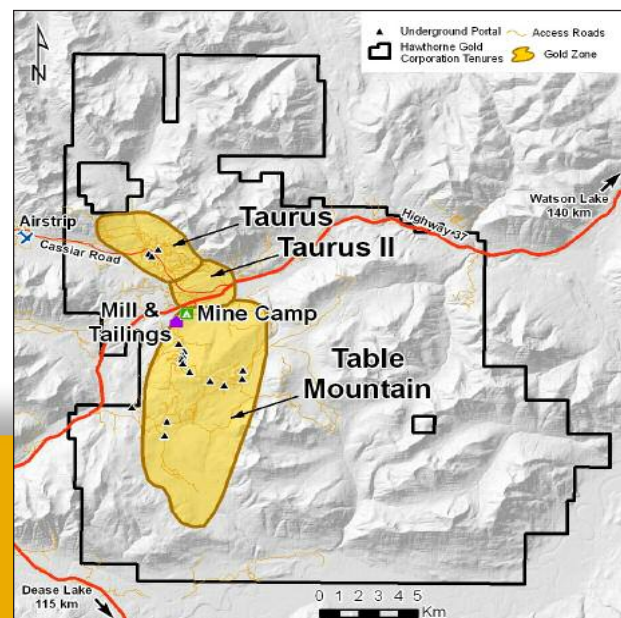
- 6,567 line-kilometre geophysical survey
- 2,536 metre drill program at East Bain zone
- Consolidation of camp (increased by +250%)
- Commencement of geological model
- Rehabilitation of underground access workings
- Re-establishment of the mining and exploration camp

2009 Exploration Program

- 8,000 to 10,000 metre surface diamond drill program
- Drilling, metallurgical and bulk sample work at Taurus deposit to define high-grade open pit opportunities
- Pre-development work at East Bain zone
- Soil sampling, trenching and regional mapping



- Permitted mine & mill; 270 tonnes per day (gravity and flotation circuits); extensive site infrastructure including main highway and airport access directly at site
- ~500,000 ounces of historical gold production from underground and local placer workings at approximately 0.5 ounces per ton (~15 g/t Au)



Contact Information

www.hawthornegold.com
 Tel: 604.484.3668 Toll Free: 866.869.8072
 todd@hawthornegold.com



Table Mountain Portal

Cassiar Gold Camp Current Resource Table

	Indicated				Inferred			
	Tonnes	Grade g/t Au	Contained Au Kg	Oz	Tonnes	Grade g/t Au	Contained Au Kg	Oz
East Bain ⁽¹⁾	20,101	21.21	426.37	13,708	1,158	68.57	79.38	2,552
Taurus ⁽²⁾	-	-	-	-	33,055,000	0.99	32,829.72	1,055,500
Total	20,101	21.21	426.37	13,708	33,056,158	1.00	32,909.10	1,058,052

Table Mountain Deposit and Cassiar Gold Mine

Highlights

- National Instrument ("NI") 43-101 mineral resource estimate
- High-grade mineralized gold systems identified across Table Mountain property
- 13 portals/adits and ~25 kilometres underground workings access numerous mineralized zones
- Hosted in extensive quartz-carbonate-gold vein systems similar to some of Canada's largest gold camps, including Timmins, Kirkland Lake and Val d'Or

Processing Plant

- Permitted 270 tonnes per day gravity/flotation mill, power plant, and tailings impoundment facility

Taurus Deposit

Highlights

- Historical production: 32,700 ounces from high-grade zones within deposit
- NI 43-101 mineral resource estimate
- Opportunity: open pit, bulk tonnage; selected smaller high-grade open pits

Michael Petrina, P.Eng., the Company's Vice President of Mining and a Qualified Person as defined by National Instrument ("NI") 43-101, has reviewed and approved this technical information. A feasibility study has not been completed for any projects discussed in this presentation and there is no certainty the disclosed targets will be reached nor that the proposed operations will be economically viable.

⁽¹⁾ Update of Technical Report on the Table Mountain Property, Liard Mining District, BC on the Table Mountain Property prepared by Beacon Hill Consultants (1988) Ltd. - June 1, 2008. For 68.57 g/tonne cut values, individual assays greater than 68.57 g/tonne Au are cut to 68.57 g/tonne Au.

⁽²⁾ A newly updated NI 43-101 report (Wardrop Engineering Inc. – Updated Resource Report on the Taurus Deposit – Liard Mining District, BC - dated March 11, 2009) regarding the Taurus Property is available on www.sedar.com. Taurus NI 43-101 resource estimate conversion equates to 33.055 million tonnes at 0.99 g/t Au. This uses a cut-off grade of 0.50 g/t Au.

Executive Management Team

Michael Beley	Chairman & Director
Richard Barclay	President, CEO & Director
David W.J. McAdam	Interim CFO
Michael Petrina	VP Mining
Peter A. Ball	VP Corporate Communications
John Dadds	Exploration Manager
Nancy La Couvée	Corporate Secretary
Harvey Brooks	Director
Bernard Kahlert	Director
Dale A. Sketchley	Director
Paul Fong	Director
John-Mark Staude	Advisor
David Rhys	Advisor
Jack McClintock	Advisor
Marlin Murphy	Environmental & Government Affairs
Patricia Fong	Controller

Share Structure

Issued & Outstanding:	74,935,074
Fully Diluted:	92,914,948
Insider Ownership:	3,229,900

For More Information

www.hawthornegold.com

Corporate Address:

Suite 1580 One Bentall Centre
505 Burrard Street, Box 72
Vancouver BC Canada V7X 1M5

Todd Hanas, Investor Relations

todd@hawthornegold.com

Tel: 604.484.3668 Toll Free: 866.869.8072

Peter A. Ball, VP Corporate Communications

pball@hawthornegold.com

Tel: 604.629.1505

Certain statements herein may contain forward-looking information within the meaning of applicable securities laws. Forward-looking information appears in a number of places and can be identified by the use of words such as "intends" or variations of such words and phrases or statements that certain actions, events or results "may", "could", "would", "might" or "will" be taken, occur or be achieved. Forward-looking information includes statements regarding the Company's exploration and development plans with respect to its properties and the estimation of mineral resources and are subject to such forward-looking risks, uncertainties and other factors which may cause the Company's actual results, performance or achievements, or industry results, to be materially different from any future results, performance or achievements expressed or implied by such forward-looking information. Such risks include gold price volatility, change in equity markets, the uncertainties involved in interpreting geological data, increase in costs and exchange rate fluctuations and other risks involved in the gold exploration and development industry. There can be no assurance that forward-looking information referenced herein will prove to be accurate, as actual results and future events could differ materially from those anticipated in such statements or information. Also, many of the factors are beyond the control of Hawthorne Gold. Accordingly, readers should not place undue reliance on forward-looking information. All forward-looking information herein are qualified by this cautionary statement. The Company does not undertake to update such forward-looking information except in accordance with applicable securities laws.